



IMPLEMENTATION OF CO-WORKING SPACE IN A CAFE BUILDING WITH A MODERN ARCHITECTURE CONCEPT

Dimas^{1*}, Hendra Fahrudin Siregar², Cut Nuraini³

^{1,2} Architecture Department, Universitas Pembangunan Panca Budi – Indonesia

³ Master of Urban & Reg. Planning Dept., Univ. Pemb. Panca Budi – Indonesia

*Corresponding author: dimas.d0991@gmail.com

ARTICLE INFO	ABSTRACT
Date received : 15 Oct 2022 Revision date : 10 Nov 2022 Date received : 15 Nov 2022 Keywords: Co-working Space & Cafe, architecture Modern	<i>The application of the co-working space concept in cafes with a modern architectural approach has become a phenomenon that has attracted attention in the context of the workplace and visitor experience. This research aims to explain how combining co-working space with a modern cafe concept can create a multifunctional environment, combining elements of work space functionality with a comfortable cafe atmosphere and attractive aesthetics. By using literature methods and direct observation of co-working work space that is integrated with a cafe, this research shows that co-working space in a modern cafe is not only a place to work, but also a place to collaborate, socialize and inspire. The interior design is carefully chosen and uses modern architectural concepts such as the use of minimalist materials, natural lighting, and flexible space to support the dynamic functionality of the space. The results of this research show that the concept of co-working space in a cafe with a modern architectural approach has a significant impact on user experience. Visitors have the opportunity to work efficiently while enjoying the cozy and inspiring atmosphere of the cafe. Technology integration, ergonomic comfort and adequate facilities are important factors in attracting user interest.</i>

INTRODUCTION

Coworking space is a shared work environment designed to facilitate various individuals, professionals or small companies to work independently or collaborate in one space. Coworking spaces usually provide shared facilities such as work desks, meeting rooms, fast internet access, printers, shared kitchens, rest area, and other facilities that can be used by members. Dr Ramdani (2020).

Coworking space interior design usually includes comfort and aesthetic aspects that can increase productivity. An attractive and comfortable work environment helps coworking members to work more effectively. Coworking spaces have become a popular alternative for many individuals and small companies looking for an inspiring, flexible and affordable work environment. It is a place where people from different backgrounds can work, study, and collaborate together. The application of modern architecture in coworking spaces includes several design principles that can increase the comfort, productivity, and attractiveness of coworking spaces. Modern architecture tends to utilize space open which allows air flow and natural light to enter the room. This design can create an environment that is bright, feels spacious, and strengthens feelings of openness and collaboration among its residents. J Kurniawan (2020). A comfortable design of activity spaces is needed so that facility users can feel at ease while engaging in their activities (Negoro & Nuraini, 2022). The creative shaping of a space or container for community activities must also take into consideration the characteristics of its users (Nuraini, 2019).



Design Problems

Based on the background description above, the formulation of this design problem is How the CO-WORKING SPACE design can be applied and integrated in a cafe using modern architectural concepts.

METHOD

The following design process comprises five sequential stages, encompassing data collection (for both the building and site), programming phase (for both the building and site), analysis (for both the building and site), conceptualization (for both the building and site), and synthesis (Nuraini & sudrajat, 2010). This Co-Working Space design is located on Jl Puri, Medan City, close to Al-Ulum School and not far from the Medan City Grand Mosque. The location of this design can be seen in the following image.



Figure 1. Design location
 (Source: Processed by the author based on Google Maps 2023)

To achieve the goal as well as the function achieved, I carried out an in-depth study of Co-Corking Space, a relevant modern architecture. The process of designing a co-working space in a cafe by applying modern architectural concepts involves several steps that can produce a space that is functional, aesthetic and in accordance with user needs. There are several stages that I did, including: Research and Analysis, Setting Design Goals, Preparing Design Concepts, Selection of Materials and Interior Design, Modeling and visualization
 In the whole process, it is very important to maintain a balance between cafe and Co-working Space innovation.

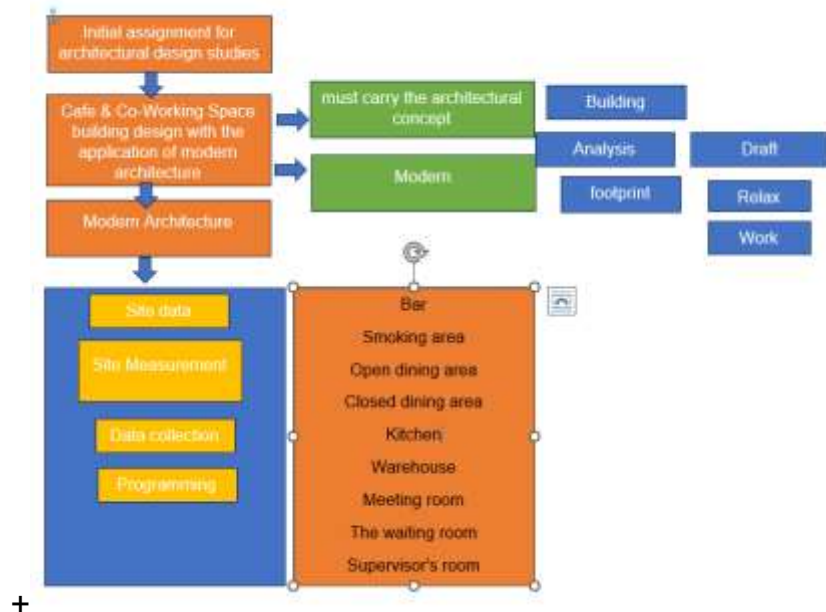


Figure 2. Design Process
 (Source: Author Construction, 2023)

RESULT AND DISCUSSION

Modern architecture in its golden age has had a lot of influence on many architectures throughout the world. The spread of modern architecture at that time could not be stopped and it became a style that was



widely used throughout the world, including Indonesia. The influence of modern architecture emerged in Indonesia during the Dutch colonial occupation. European architects at that time introduced classical European architecture and modern architecture to the Indonesian people. Y sumalyo (2019).

Co-working space in a cafe involves combining two main concepts: a functional work area that can support productivity, and a comfortable cafe atmosphere that allows social interaction and relaxation for visitors. NUR ZAHIRAH (2019). Designing a co-working space in a cafe requires a good understanding of user needs, integration of the cafe concept with the work space, and the application of modern design elements that can meet the goals and expectations of users. The digital transformation trend that is now being adopted by various business sectors in both developed countries and developing countries such as Indonesia means that the need for work space is increasing along with the growth of startup businesses (Marketplus 2017). Co-working space is basically a work space concept that can be used together with start-ups or other companies.

Co-working spaces provide an alternative for individuals who do not have a permanent office or want to work outside the home. It provides a flexible workplace with access to office facilities such as work desks, chairs, internet and meeting rooms.

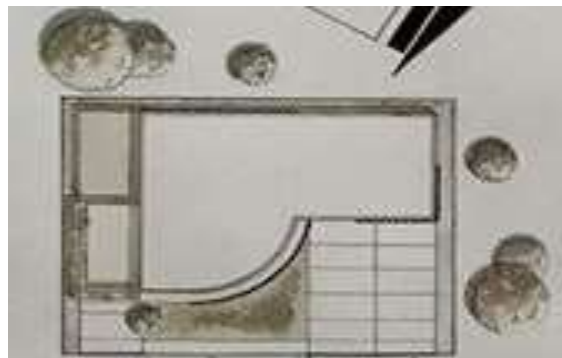


Figure 3. Co-Working Space Site Plan

The application of the co-working space concept in the cafe using modern architectural principles aims to create a holistic experience for visitors, expand market segments, and optimize efficient use of space. This also helps the cafe to remain relevant in providing facilities that suit customer needs. In the existing circulation and utilities of the site, the location of the football field as the site of the Co-Working Space & Cafe is surrounded by the main circulation.

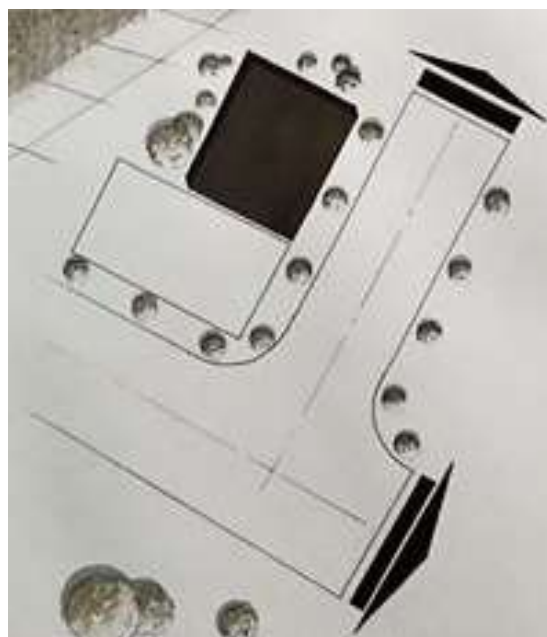


Figure 4. Circulation

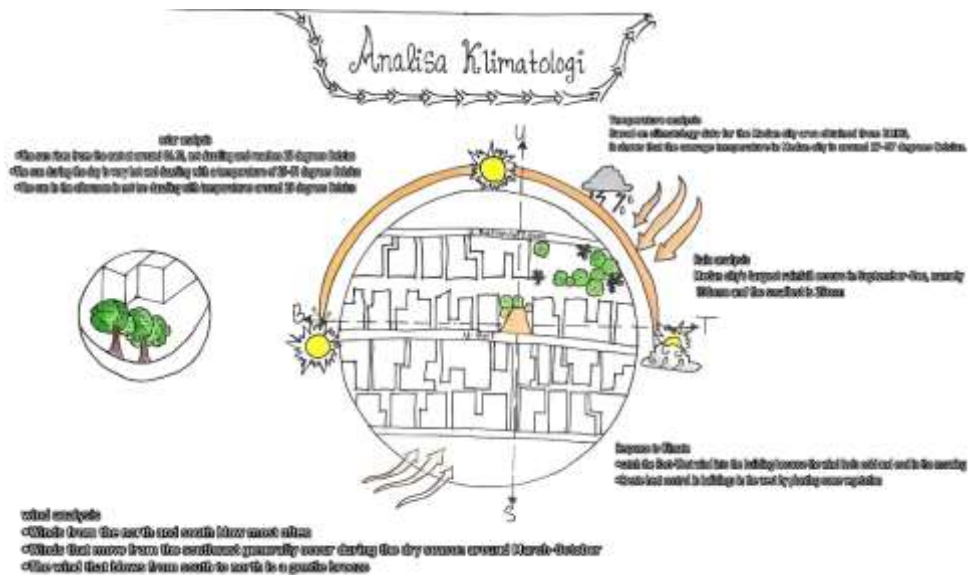


Figure 5. Site Analysis

Co-working Space is designed to accommodate work, relaxing and socializing activities so that the rooms are open and some are closed.

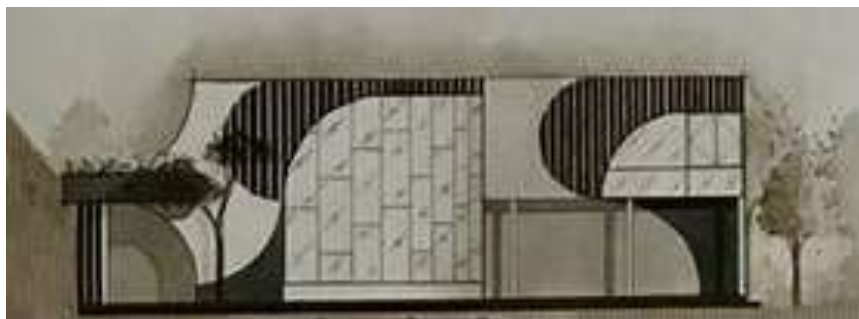


Figure 6. Co-Working Space Side View Plan

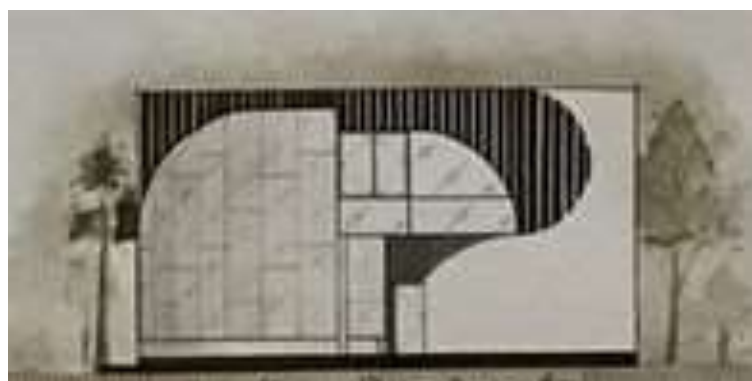


Figure 7. Front View Plan of Co-Working Space

The main structure of the Co-Working Space is dominated by steel structures. The roof frame construction uses light steel with Gypsum & asbestos covering material. The barrier and safety of the sides of the Co-Working Space uses tempered glass. This structure was chosen because it has better shape flexibility and strong structural durability, resulting in a Co-Working Space building that looks more modern and is acceptable to millennials.



To support relaxed and collaborative work functions, the Co-Working Space which functions as Work & Relax is designed with a modern and comfortable interior. This type of filler furniture is designed to be as comfortable as possible with two types of tables, namely spiral and rectangular.



Figure 8. Co-Working Space interior with two types of tables and chairs

You can see the Co-Working Space building which functions as Work & Relax. This generally seeks to show the modern physical appearance of the building. The external environment of the Co-Working Space as a form of Modern Architecture still maintains a number of vegetation and existing sites, such as pedestrians, utility routes, and open space functions (fields). Co-Working Space atmosphere.



Figure 9. Image of Co-Working Space

CONCLUSION

The application of the co-working space concept in a cafe with a modern architectural approach offers a dynamic environment, combining work space functionality with a comfortable atmosphere and attractive aesthetics. From the analysis that has been carried out. Thus, combining the concept of a co-working space in a cafe with a modern architectural approach proves that this space is not just a place to work, but also creates an environment that combines productivity, comfort and social interaction, providing a holistic experience. for users.

REFERENCES

- DR Ramdani, T Sundari, B Samra (2020). Co-Working Space in Pekanbaru.
- J Kurniawan, GH Purwoko, DK Wardhani (2020). Co-Working Space Project in Surabaya Using a Visual Art Approach.
- Y Sumalyo (2019). Modern Architecture
- MarketPlus. (2017). Co-Working Space
- Nur ZAHIRAH (2019). OFFICES FOR RENT FOR THE MILLENNIAL GENERATION IN SLEMAN DISTRICT
- Nuraini, C. (2019). Morphology of Residential Environment of Singengu Village in Mandailing JuNorth Sumatra. *Journal Regional and City Planning*, Vol. 30, No. 3, Page : 241-260.
- Nuraini, C., & Sudrajat, I. (2010). *Metode Perancangan Arsitektur*. Bandung Karya Putra Darwati
- Negoro, S.A., dan Nuraini, C., (2022). Konsep Kearifan Lokal pada Desain Lounge & Learning Square